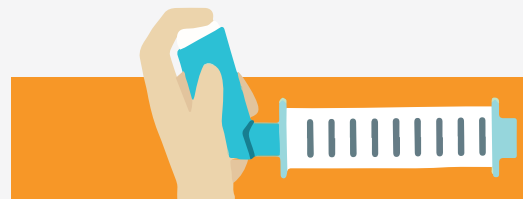
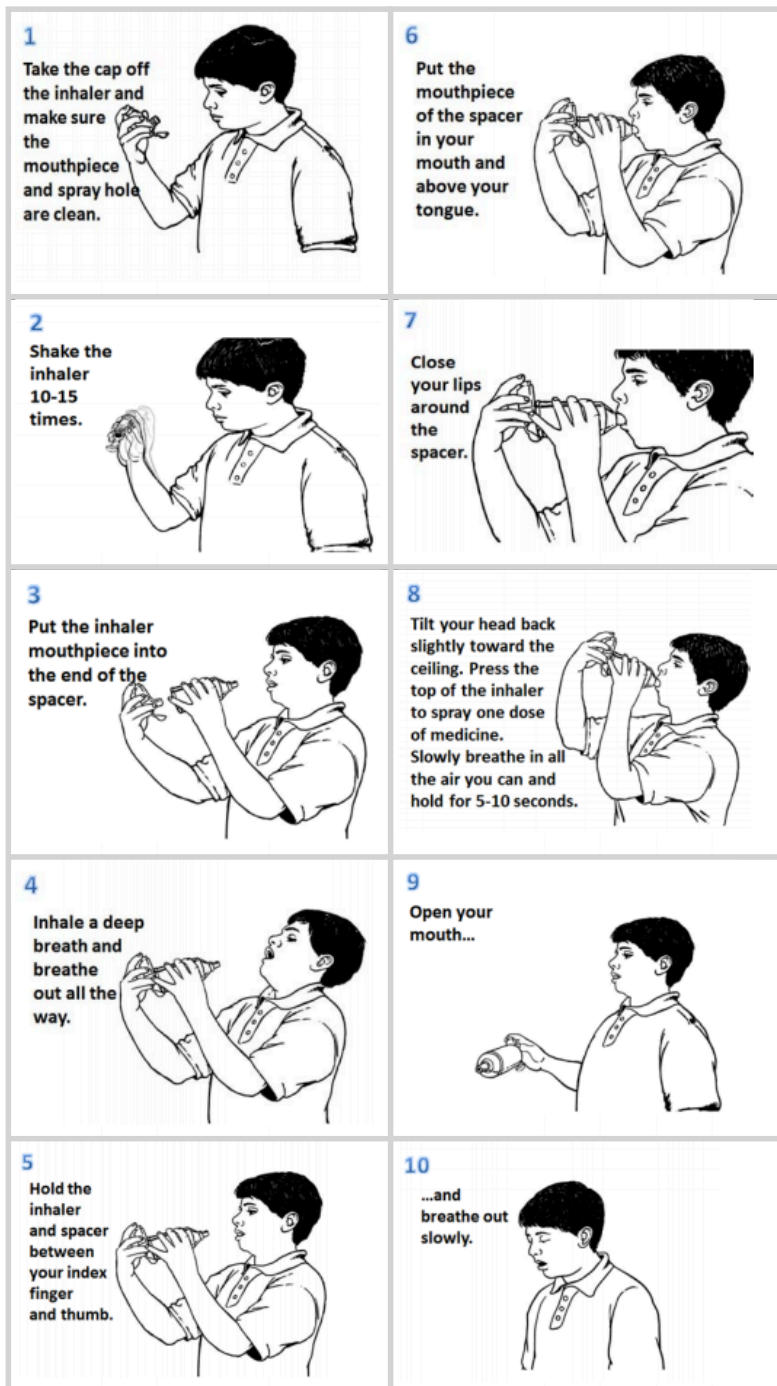


Spacer Cleaning

Clinical studies have shown that by adding a spacer to a pressurised metered dose inhaler, drug delivery to the lungs can be improved by 40% to 60%.



REMINDER:

IMPORTANCE of cleaning spacer:

- 1) Disassemble the spacer/VHC after the last dose of the day
- 2) Immerse the parts in lukewarm tap water containing a few drops of household detergent
- 3) Shake the parts in the water and rub them with a soft cloth
- 4) Leave the parts soaking for 15 min, then take them out of the water
- 5) Do not rinse or dry rub the inside of the parts
- 6) Rinse soapy water off the mouthpiece
- 7) Place the parts on a clean towel to air dry overnight
- 8) Reassemble the parts the next morning and check that the valve is not stuck
- 9) Wash your spacer/VHC **AT LEAST every week**